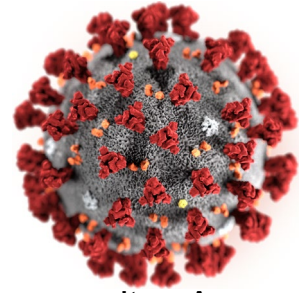




Helendale Community Services District

April 2020

Notice to Our Community



Due to the Governor's Executive Order N-33-20, issued Thursday, March 19, the District has closed the administrative office to the public. We continue to monitor the guidance for State and Federal authorities and will re-open as soon as possible. This is a very unusual time for all of us.

We will get through this together. We are an amazing, kind and resilient community. As we continue to exhibit these character traits during this emergency, we will emerge stronger for it. The Helendale CSD is here for you. Please don't hesitate to call if you need us. Following is some important information for you.

DISCONTINUATION OF SERVICE: During this time, the District will not disconnect water service for non-payment through June 30th. Please be advised that all fees and charges will continue to accrue. Unlike the for-profit utilities governed by the Public Utilities Commission, the District does not have the funds to forgive debt. If you are in need of a payment plan, you must make arrangements with the office prior to June 30th.

CUSTOMER SERVICE: If you need to contact customer service staff for any reason Monday through Friday from 8 to 5:30 please call 760-951-0006. If you experience a water or sewer related emergency after normal business hours the same phone number will connect you with our after-hours emergency services.

WATER/WASTEWATER: District functions are identified under the Homeland Security Department's Cybersecurity and Infrastructure Security Agency (CISA) as a critical infrastructure sector. As such, we will continue to provide clean, safe drinking water and ensure your sewer system continues to work as efficiently as ever.

SOLID WASTE: Trash service will continue as usual and the office will continue to issue dump passes upon request. The bulky item pick-up program has been temporarily suspended. Please call if you have any questions.

THRIFT STORE/RECYCLING CENTER: The Thrift Store is closed, and all donation pick-ups have been suspended during this time. You are welcome to drop off any donations in the bin located in front of the store.

PARK: Although all of our programming has suspended for the time being, the Community Park will remain open 7 days a week from dawn to dusk (unless ordered to close). Please note that the playground is closed due to health considerations.

Payment Options

We have many options when it comes to paying your bill!

Online at helendalecsd.org (\$2.50 fee will be waived during the pandemic)

Phone – 1-855-743-7172 (\$2.50 fee will be waived during the pandemic)

ACH – Fill out an application on our website.

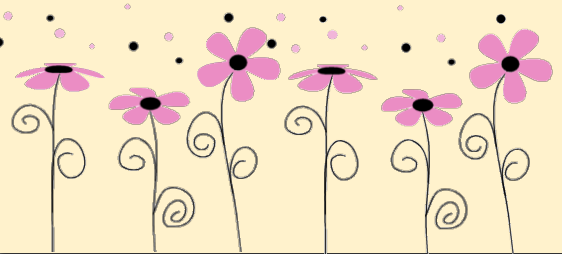
Mail or drop off in the drop box in the front of the office.

These services will resume in the future; however, we do not have a return date:

- Mobile Veterinary Clinic
- Assemblyman Obernolte Office Hours
- Bereavement Support
- TOPS Weight Loss
- Fitness Classes
- Open Gym
- Tai Chi

FARMERS MARKET

The Helendale Certified Farmers Market will remain open during the COVID-19 pandemic as long as it remains safe to do so. During the pandemic the market will only have food vendors so residents will still be able to shop for their grocery items. Please respect social distancing, allow vendors to collect and bag all items, and please make your visit to the market short. We appreciate your patience and understanding during this time.



CLEAN UP DAY



Our May 2nd Clean Up has been postponed due to the COVID-19 pandemic. The CSD and Burrtec Waste will work together to reschedule a new date for the clean up. Please watch your newsletter for a new date!

Community Resources for Seniors

If you are a senior 62 or older and are interested in signing up for Meals on Wheels, please contact Nyla Kolterman at (951) 314 – 7235.

If you would like to volunteer with the Meals on Wheels program, please contact Judy Enlow at 760-243-7948. Meals cost \$15 per week and are distributed every Monday. Participants receive 5 frozen meals, dessert, rolls, fruit and a ½ gallon of milk.

Tuesday & Thursday drive by lunch at the Helendale Community Church on 15488 River View Rd. Starts 11:45 am while supplies last.

HELENDALE CSD
CONCERTS
in the Park
6-9 PM
15425 WILD RD

June 13 Woodie & The Longboards
Beach Boys, Eagles & Beatles

July 11 The MIXX
Classic Rock

Aug 8 City Beat
Rock, Funk & Motown

Sep 12 Highway 91
Country

Bring a blanket or chair!



April Watering Times: Between 9:00 am and 3:00 pm. Test run your irrigation system to check for leaks and spray heads that are broken or out of adjustment. Reset irrigation schedules and increase watering time as temperatures rise.